

HDC Series (Hydraulic 4-pole Platen Forward and Backward Type)



Cutting



Wrapping/Packaging
Materials



Carpet/Building
Materials



Nonwoven
Fabric/Filters



Paper/Stickers



Rubber/Packing

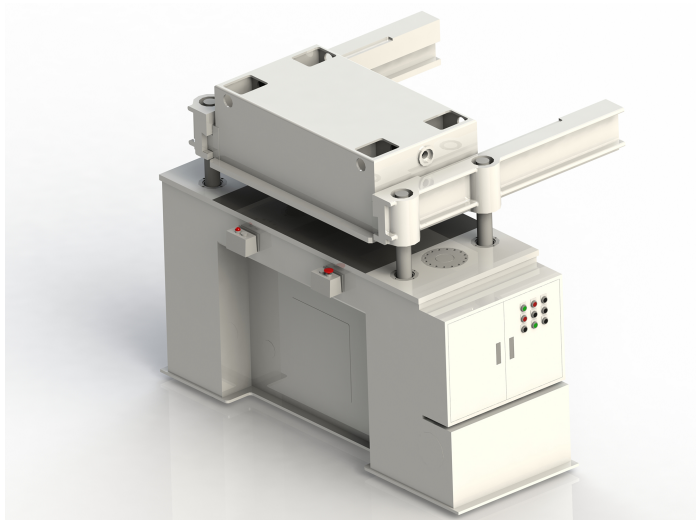
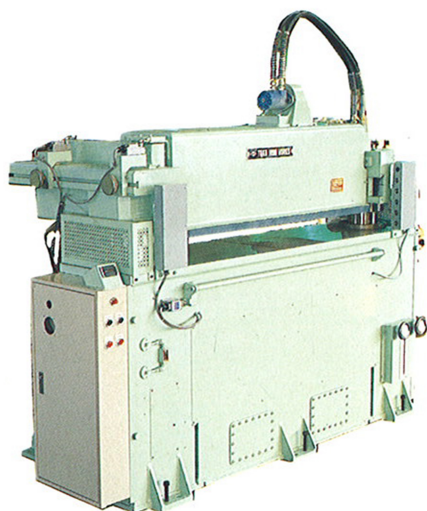
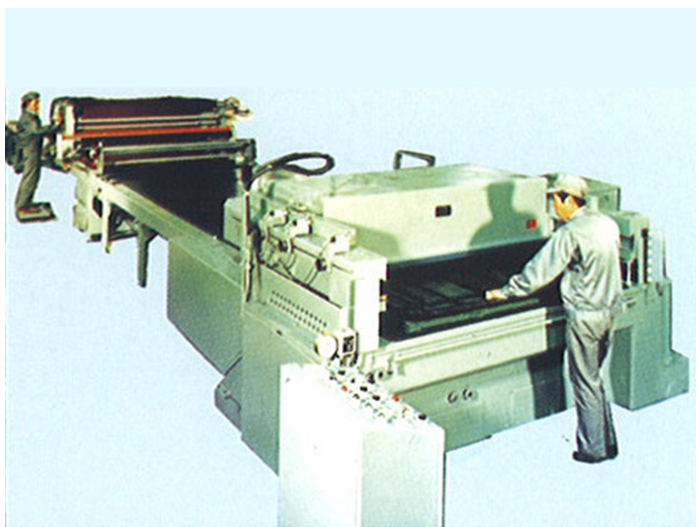


Super
Fiber/Apparel

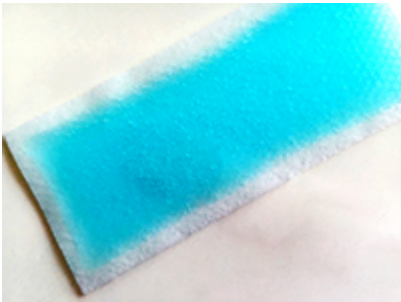


Medical

Product Image



Main Specifications



Main Specifications

TOKO can choose the machine that suits the customer's needs.

Width	MIN600mm – MAX2000mm
Depth	MIN600mm – MAX1500mm

* Can be manufactured in increments of 100mm.

Because the punching die and material does not move as the platen moves back and forth or up and down, cuts will be made without error.

Features

As the platen moves back and forth, the front of the die face can survey, and materials can be cut without creating excess waste.

Because the punching die and material does not move as the platen moves back and forth or up and down, cuts will be made without error.

Since the punching die and material do not move, cuts can be made without deviation.

Tonnage

- 50TON
- 75TON
- 100TON
- 120TON
- 150TON
- 200TON

Cutting Method

TOKO has adopted LS (limit switch) and PS (pressure switch).

LS punching allows you to adjust the lower limit, so the punching height can be easily set.

PS punching allows for the punching accuracy to be constant by placing the platen on parallel blocks (4 points) that are part of the machine body and using the mechanical end for cutting.

Options

- Punching Die Clamping Device (punching dies can be set on the platen side)
- Mat Transfer Device
- Electric Parallel Blocks
- Platen Forward Limit Setting Device
- Absolute Detector
- Half-cut Specification
- Material Supplying Device
- Mat Transfer Device (board moves every 1 shot)
- Electric Parallel Blocks (damper device that can store 0.01mm settings)
- Stretching Machine
- Post-cutting Product-moving Device

Inquiries

Since we can also make appointments for meetings upon request, please feel free to contact us.



0879-25-4125