

SHDC Series (Hydraulic 4-post 2-stage Type)



Cutting



Food Containers



Wrapping/Packaging Materials



Highly-functional Film



Carpet/Building Materials



Nonwoven Fabric/Filters



Paper/Stickers



Rubber/Packing

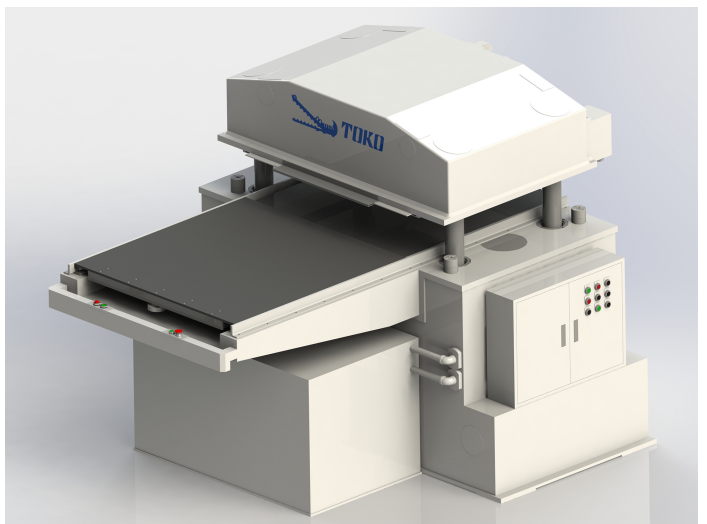
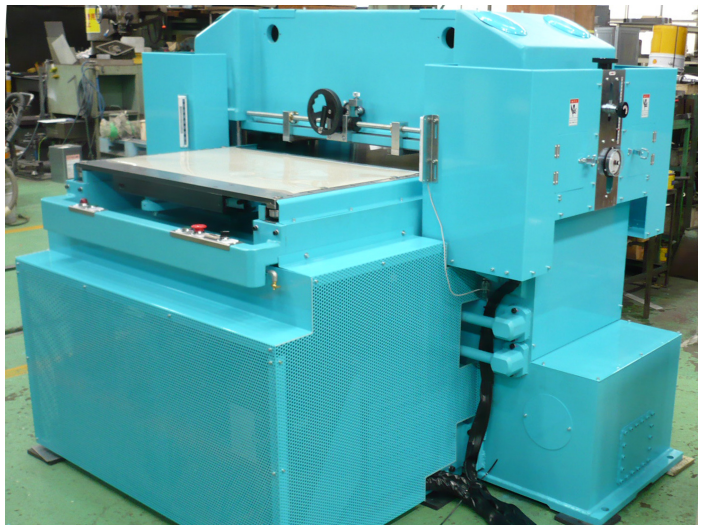
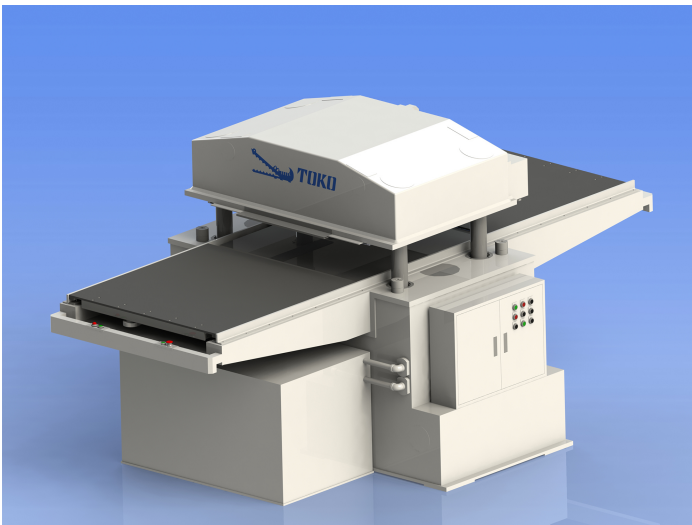


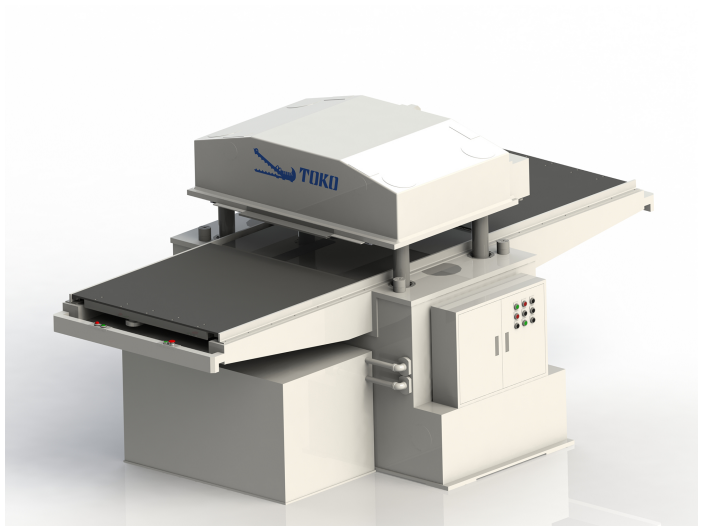
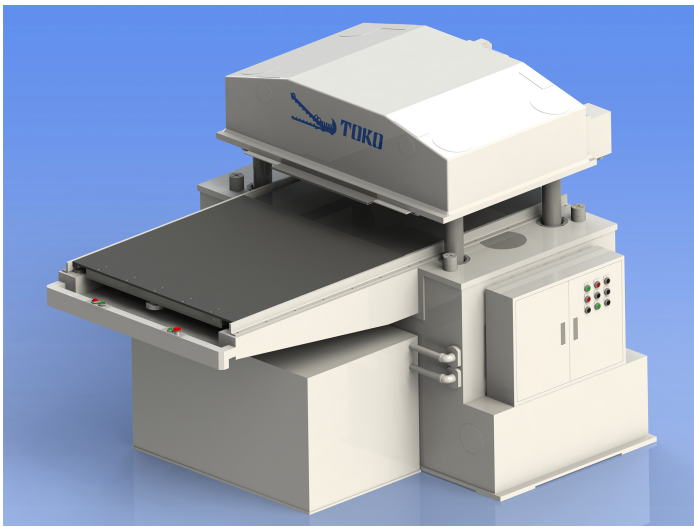
Super Fiber/Apparel



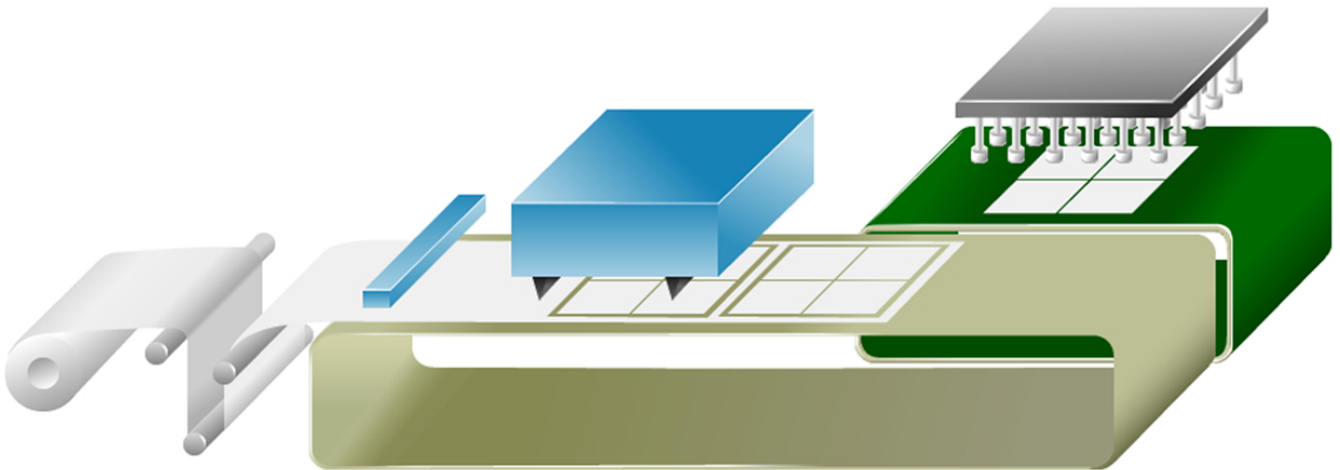
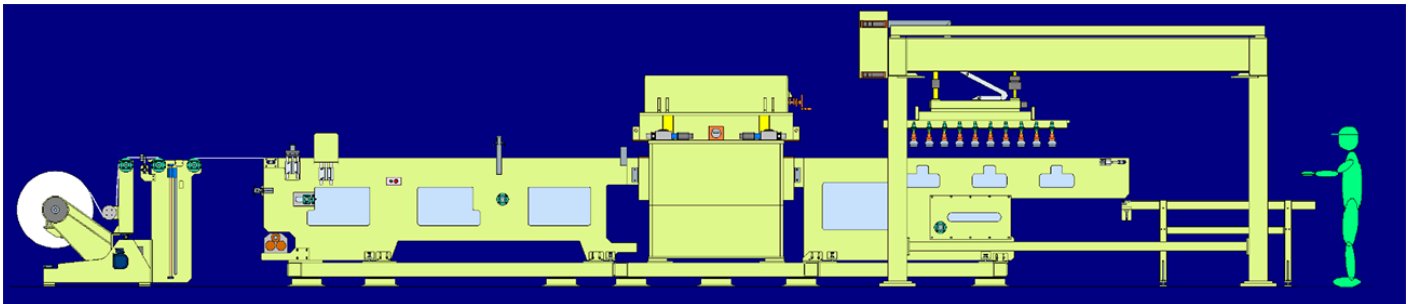
Medical

Product Image



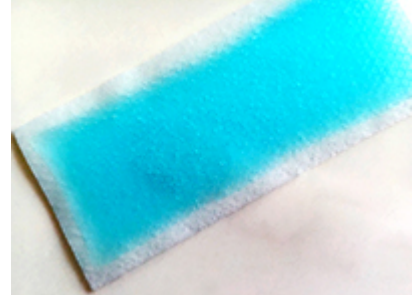


Example System



Main Specifications





Main Specifications

TOKO can choose the machine that suits the customer's needs.

Width	MIN600mm – MAX3500mm
Depth	MIN600mm – MAX3500mm

* Can be manufactured in increments of 100mm.

The table is mobile. (Material/mold is placed on the table and cut.)

Tonnage

- 50TON
- 75TON
- 100TON
- 120TON
- 150TON
- 200TON
- 250TON
- 300TON

Cutting Method

TOKO has adopted LS (limit switch) and PS (pressure switch).

LS punching allows you to adjust the lower limit, so the punching height can be easily set.


PS punching allows for the punching accuracy to be constant by placing the platen on parallel blocks (4 points) that are part of the machine body and using the mechanical end for cutting.

Options

- Sheet Feeding Roller
- Post-cutting Product-moving Device
- Material Supplying Device
- Mat Transfer Device (board moves every 1 shot)
- Electric Parallel Blocks (damper device that can store 0.01mm settings)
- CCD Camera Alignment Device
- Various Front and Rear Lines
- Inline Support Available for User's Facilities

Inquiries

Since we can also make appointments for meetings upon request, please feel free to contact us.

 **0879-25-4125**