

Automotive Interior Molding Press



Molding

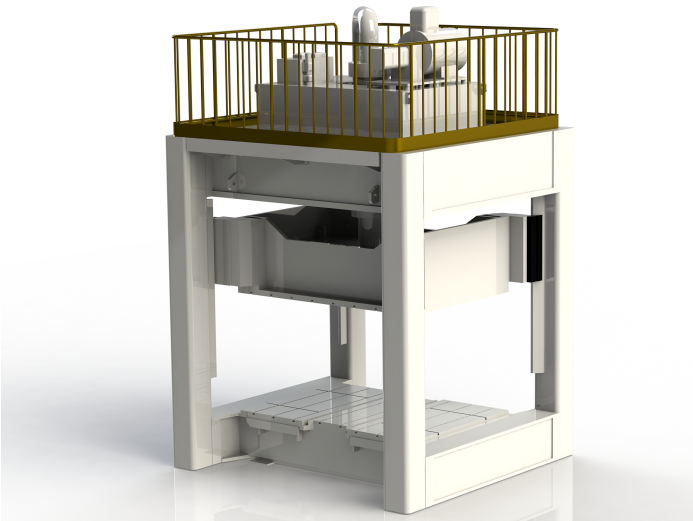
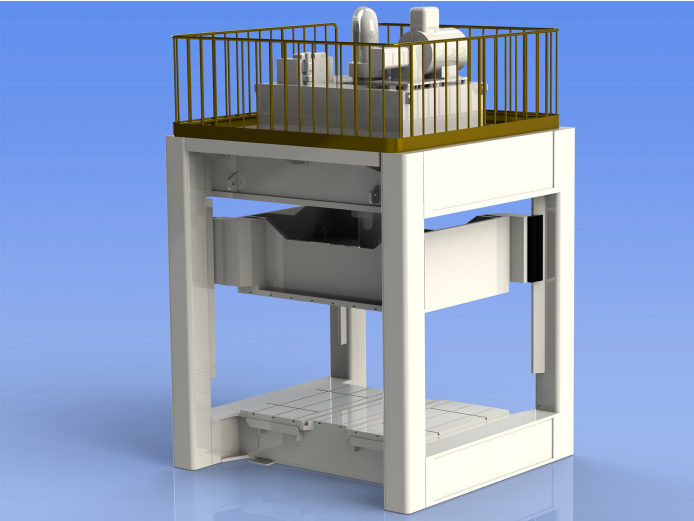


Cutting

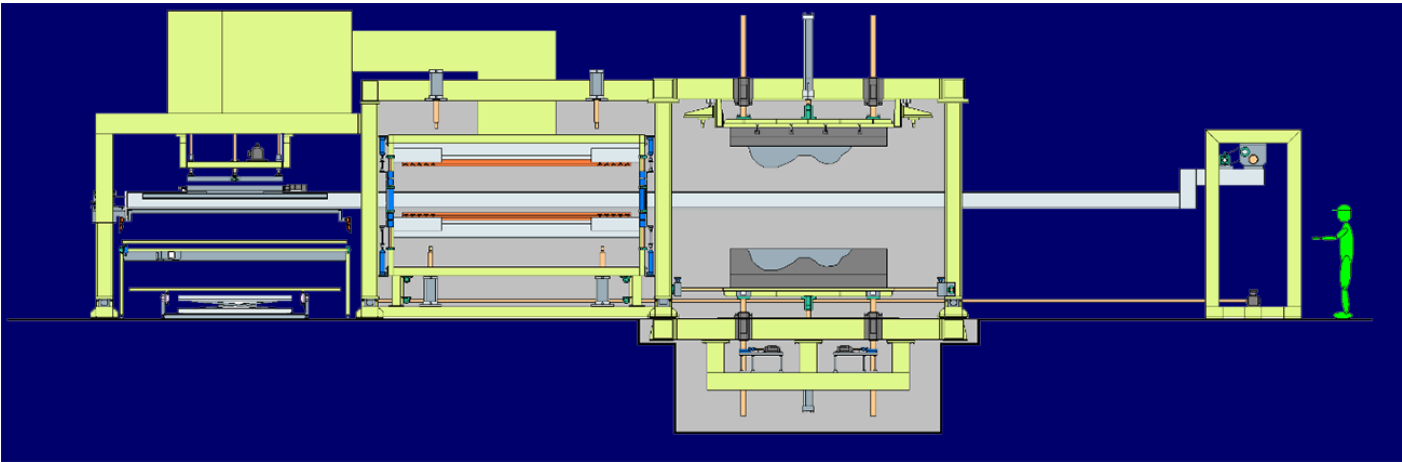


Press for
Automotive
Interiors

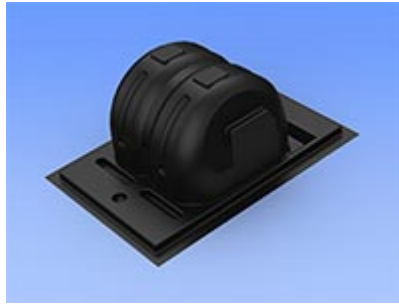
Product Image



Example System



Final product



- Sound-absorbing/soundproofing material for interiors and material for the trunks of various vehicles
- Vehicle Ceiling Material
- Vehicle Floor
- Wheelhouse

Main Specifications

Model	SFDC-2500×1500-150T
Effective Forming Area	(W) 2500× (L) 1500mm
Press Pressure	150Ton
Hydraulic Motor	37kw
Stroke	1000mm
Open Height	1300mm
Lowering Speed	300mm/sec – 15mm/sec (proportional flow rate control)
Lifting Speed	300mm/sec

Features


- Highly rigid structure with long-lasting high performance.
- Easily operated using a graphic panel.
- High level of safety from using safe photoelectric tubes, fastening pins, etc.

Options

- Die Lifter
- Autoclamp
- Safety Shutter
- Fall Prevention Device
- Platen Position Control Using Linear Scale Control
- Punch (sub-hydraulic) Circuit
- Temperature Control Circuit
- Servo or Hydraulic

Inquiries

Since we can also make appointments for meetings upon request, please feel free to contact us.

 **0879-25-4125**